

# RISA-Revit 2012 Link

*Version 10.0 - User's Manual*



26632 Towne Centre Drive, Suite 210  
Foothill Ranch, California 92610

(949) 951-5815  
(949) 951-5848 (FAX)  
[www.risatech.com](http://www.risatech.com)

Copyright 2011 by RISA Technologies, LLC All rights reserved. No portion of the contents of this publication may be reproduced or transmitted in any means without the express written permission of RISA Technologies, LLC.

We have done our best to ensure that the material found in this publication is both useful and accurate. However, please be aware that errors may exist in this publication. RISA Technologies, LLC makes no guarantees concerning accuracy of the information found here or in the use to which it may be put.



# Table of Contents

<b>Table of Contents .....</b>	<b>4</b>
<b>Introduction.....</b>	<b>7</b>
How will using Revit Structure and RISA together help me? .....	7
Installing the RISA-Revit Link.....	8
<b>Version Information.....</b>	<b>10</b>
Link Information.....	10
Compatibility Information.....	10
Download Links .....	10
<b>Workflow.....</b>	<b>11</b>
Which Program Should I Start In?.....	11
Two-Way Integration (Round-Tripping).....	12
Workflow Problems .....	13
<b>Getting Started.....</b>	<b>14</b>
Export Revit Structure Model to RISAFloor or RISA-3D .....	14
Import RISAFloor or RISA-3D model to Revit Structure .....	17
<b>Tagging Beams.....</b>	<b>22</b>
Loading Tags.....	22
Procedure .....	22
<b>Technical Support .....</b>	<b>26</b>
<b>Appendix A - Data Exchange.....</b>	<b>28</b>
Floors/Levels .....	28
Grids .....	28
Beams .....	28
Columns .....	30
Braces .....	31
Walls.....	31
In-Place Families.....	32
Footings.....	32
Decks/Slabs.....	32
Materials .....	33
Boundary Conditions .....	33
Loads.....	33
<b>Appendix B - Mapping Files .....</b>	<b>36</b>
Shape Mapping .....	36
Material Mapping.....	38

RISAFloor Load Case Mapping.....	38
<b>Index .....</b>	<b>40</b>



---

## Introduction

Revit Structure has spread the BIM concept (Building Information Modeling) to the structural community, and RISA is in full support of this new wave of structural design workflow. For this reason, RISA Technologies has been an Autodesk Authorized Developer for many years. This means that the RISA developers are given full access to Revit Structure's behind-the-scenes code, as well as advanced alpha and beta copies of new releases. This version of the RISA-Revit link represents an evolution of many previous versions of the link, and makes every effort to make the transition between RISA and Revit seamless, robust, and thorough.

### How will using Revit Structure and RISA together help me?

The fundamental advantage of linking RISA and Revit Structure together is that it helps you to avoid mistakes, and eliminate redundancies (duplication of effort). Traditionally, structural models were created in RISA either from scratch or based off of existing drawings. The model was solved, and then results were printed and used to manually update drawings. Any simple oversight or typo could cause serious problems. A mistakenly entered beam size on the drawings meant that an undersized beam would be erected, which could potentially fail. Furthermore, hours were wasted manually transcribing text from one program to another.


Eventually RISA developed a DXF Import/Export process that eliminated some of these problems. AutoCAD drawings could be imported to RISA, although no member sizes or load information could. The DXF import process strictly established geometry and for basic structures could frequently take as long as modeling from scratch in RISA. DXF drawings could also be exported from RISA, but they could not 'update' existing drawings, so most of the drafting work on framing plans had to wait until the structural engineer's analysis was complete. Any changes made to the structure during a project had to separately be made to both RISA and CAD drawings.

When BIM (Building Information Modeling) started gaining popularity in the form of Revit Structure, it became apparent that these limitations would no longer exist. By creating a 3D model of smart 'elements' (rather than just linework) it became possible to link large amounts of information between the drawings (Revit Structure) and the analysis model (RISA). The concept of round-tripping became introduced, whereby changes and updates could be continuously shared between models. The RISA-Revit Link exists to make this integration as seamless as possible.

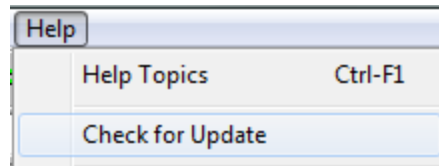
## Installing the RISA-Revit Link

The RISA-Revit Link works best when both RISA and Revit Structure are installed on the same computer. This is not a strict requirement though. For this reason the installation instructions below present steps for both the Revit computer and the RISA computer. If both programs are present on one machine then ensure that all steps are followed for that machine:

### ***Revit Computer***

1. Ensure that Revit Structure is installed, and that the version matches that shown on the [Version Information](#) page.
2. Open Revit Structure and click on the Communication Center button . This button can be found along the top toolbar, in the upper-right corner. Ensure that no product updates are available. If product updates are listed as available then install them.
3. Download the latest RISA-Revit Link from the RISA website: [http://risatech.com/partners/prt\\_revit.html](http://risatech.com/partners/prt_revit.html)
4. Close Revit Structure (if it is currently open) and run the installer. Once the installation is complete you are ready to begin using the RISA-Revit Link.

### ***RISA Computer (may be separate from Revit Computer)***



1. Launch RISA-3D, and go to the Help menu. Click on 'Check for Update'. If an update is available then download and install it.
2. Repeat Step 1 for RISAFloor if applicable.



## Version Information

### Link Information

RISA-Revit Link Version 10.0

### Compatibility Information

Product	Version
Revit Structure	2012
RISA-3D	9.1 (or Higher)
RISAFloor	5.1 (or Higher)

### Download Links

RISA-Revit Link	<a href="http://risatech.com/partners/prt_revit.html">http://risatech.com/partners/prt_revit.html</a>
Revit Structure	<a href="http://www.autodesk.com">www.autodesk.com</a>
RISA-3D	Contact RISA
RISAFloor	Contact RISA

## Workflow

There are a variety of options for workflow between RISA and Revit Structure. Before using the RISA-Revit Link it is best to understand what these are, and how they can best be used for your project.

### Which Program Should I Start In?

The RISA-Revit Link encompasses three programs (RISA-3D, RISAFloor, and Revit Structure). Each program has its own purpose, but all three fully integrate for one complete building design. The reasons for starting in each program are listed below:

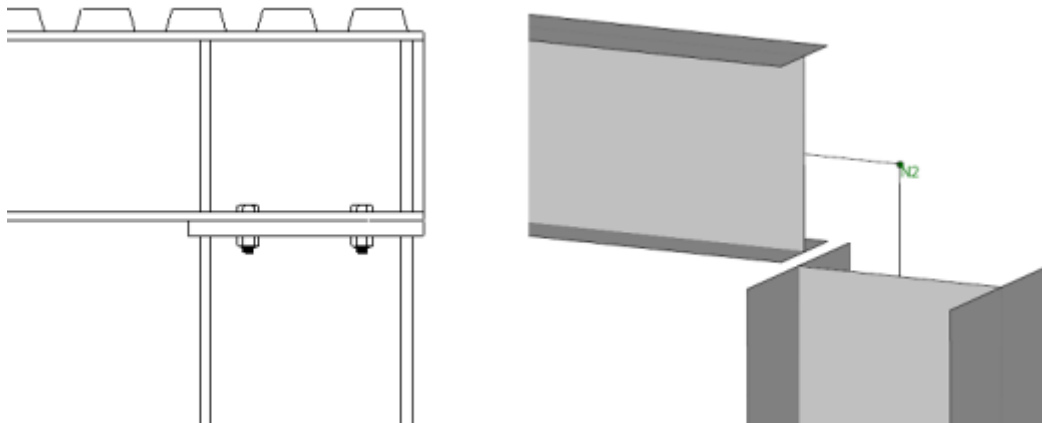
#### ***Starting in Revit Structure***

This is the most common workflow. The reason is that most Revit Structure models are created based off of Revit Architecture models. In fact, it is common for the Revit Structure model to use the grids and levels from the architect's model, in order to ensure coordination between architecture and structural drawings.

Remember that the goal of the Revit model is to represent the physical model as accurately as possible, whereas the goal of the RISA model is to represent the analytical model as accurately as possible. There are many circumstances where physical arrangements are better represented in different ways from each other.

A Revit model may have a very complex physical arrangement that can be greatly simplified for structural analysis. By starting in Revit you can model these physical complexities, and assign an analytical arrangement for RISA to use. If you instead start in RISA, the link will create members in Revit, but it will create them with the most basic physical geometry, since it does not know your intentions for details.

Take the detail shown below for example. On the left is the Revit representation of a column and beam. On the right is the RISA representation. The connection details shown in Revit are necessary for construction drawings, however in RISA a simple 'fixed' connection is sufficient to give an accurate analysis.



A proficient Revit user can assemble a structure in Revit as fast as a proficient RISA user can assemble a structure in RISA. Therefore, especially if the architect has already created a model, it may be fastest to generate a model first in Revit Structure which uses the architect's model as a template.

## ***Starting in RISAFloor***

This is the second most common workflow. RISAFloor and Revit are very similar in their scope, in that they are both designed around building-type structures which have floors, roofs, and gridlines. This is as opposed to more industrial structures which do not fit this profile. Most users who start in RISAFloor do so for the following reasons:

1. There is no Revit model from the architect, or the structural analysis must be underway prior to its availability.
2. Your proficiency in RISAFloor modeling exceeds that of Revit modeling, so you can create a building model much faster by working within RISAFloor.

There are many users who prefer to start the model in RISAFloor, just be aware that after importing to Revit for the first time your Revit model may need some massaging in order to be ready for construction documentation.

Any RISA-3D elements that are present in the RISAFloor model (from RISAFloor-3D integration) will automatically be transferred over to Revit.

## ***Starting in RISA-3D***

It is less common that RISA-3D and Revit would be linked together without also using RISAFloor. While RISA-3D does link with Revit, it is not constrained by some of the limitations that both Revit and RISAFloor have with regards to structure type. Revit is a Building Information Modeling program, so some structures which RISA-3D is well suited for (tanks, bridges, oil platforms, etc) do not fit Revit's mold of clearly defined floor levels and grids. Since the creation of RISAFloor, and due to its complete integration with RISA-3D, it is rare that RISA-3D is used on its own for building modeling purposes.

## **Two-Way Integration (Round-Tripping)**

Once a model has been imported to or exported from Revit Structure for the first time, a link is established. For most users this is the beginning of a round-trip cycle between RISA and Revit.

Every beam, column, wall, slab, etc. within Revit is assigned a unique serial number called a "BIM ID". This number is how the RISA-Revit link keeps track of members as they are modified. Whenever a one-way transfer occurs the BIM ID's of the Revit Elements get stored within the RISA model.

### ***Example***

For example, let's say that Beam M16 in RISAFloor is linked to a Revit Beam with BIM ID# 949. Whenever the link is used it will update the member properties (beam size, studs, camber, end reactions, etc) between M16 and BIM-949.

The program will also look at the location of the beam within the model and move it so that the locations match. If one of the two beams has been deleted then the other one will be deleted. The dominance depends on the direction of linking. When importing to Revit, the Revit members are made to match the condition of their RISA counterparts. When exporting from Revit, the RISA members are made to match the condition of their Revit counterparts.

### ***Efficient Practices***

It is most efficient to do a Geometric Update only when necessary. Geometric updating, especially on large models, can be very time consuming and occasionally troublesome. Certain simplified geometries within the RISA model can be unintentionally applied to actual (physical) geometries in the Revit model, which can in turn cause unintentional modification of construction drawings.

For that reason it is best to use the "Update Member Sizes Only" feature whenever geometric changes have not been made. A bonus is that the transfer happens much quicker when using this. Furthermore, you may import updated RISA models into the Revit model multiple times without re-exporting to RISA.

## Example

The steps below illustrate the workflow process for a typical job:

1. A Revit model was created, and immediately linked with a RISAFloor model.
2. Preliminary member sizing was done in RISA, and the "Member Sizes Only" were imported to Revit.
3. A gridline was moved in Revit, lengthening a bay, so the Revit model was exported to the same RISAFloor model. This updated the gridline in the RISAFloor model (thereby adjusting member lengths and moving columns). Members in RISAFloor were resized based on their new lengths.
4. The resized members from the RISA model were again transferred to Revit using the "Member Sizes Only".

## Workflow Problems

Working simultaneously on both the RISA and the Revit model can cause major problems if corresponding members are being modified in both. The example below illustrates how these problems can come about:

### Example

The steps below illustrate how simultaneously working on the same element in both RISA and Revit can lead to problems:


1. A RISA model was created, and a new Revit model was created. The RISA model was immediately imported into the Revit model.
2. An engineer working in the Revit model moved Beams A and B, and deleted Beam C to accommodate a new floor opening.
3. Meanwhile (concurrent with Step 2) another engineer applied new loading to the structure based on updated information, and resized all of the members accordingly. The engineer also changed the roof slope in RISA.
4. The RISA model was again sent to Revit. "Update Member Sizes Only" was not selected, since the RISA engineer wanted the new roof slope to appear in the Revit model.
5. Because Beams A and B were still in their original locations in the RISA model, and Beam C had not been deleted in the RISA model, they were restored in the Revit model, since the RISA model dominates when *importing* into Revit.

In order to avoid these problems, the engineer who was working on the Revit model should have coordinated with the engineer working on the RISA model. Communication between multiple people working on models is critical.

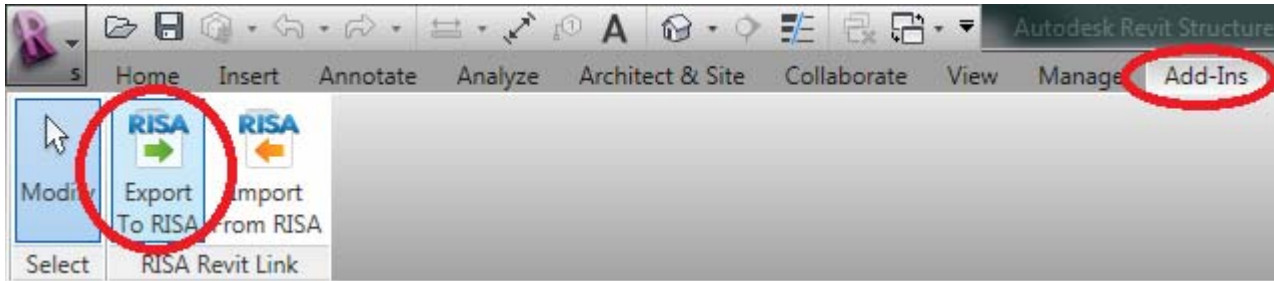
# Getting Started

Prior to using the features of the RISA-Revit Link it is advisable to learn the proper [workflow](#) procedures outlined in the previous chapter. Also, ensure that the link has been [installed](#) on the Revit computer.

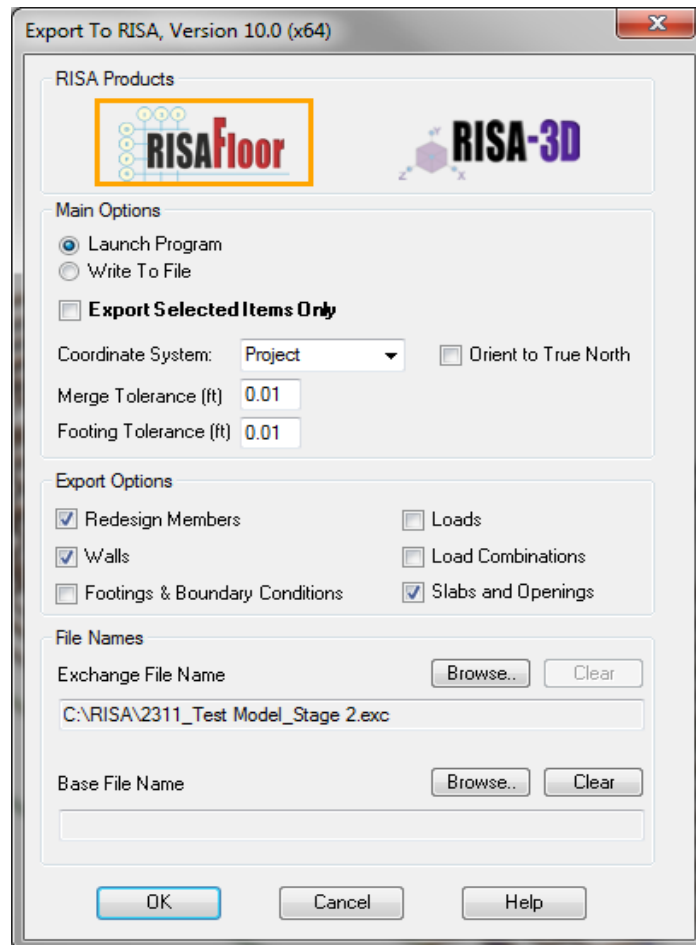
## Export Revit Structure Model to RISAFloor or RISA-3D

Once the Revit Structure model is ready to be exported to RISA, be sure to save the model .

Click on the Add-Ins tab, and then click on the Export to RISA button.



The Export dialog will appear as shown below:



## ***RISA Products***

Click on the logo of a RISA product in order to specify which one the Revit model should be exported to.

### **Note:**

- RISAFloor models contain a RISA-3D model embedded within them. By exporting to RISAFloor you are also exporting RISA-3D information to the RISAFloor model. You can access this 3D-only information by using the Director tool within RISAFloor.

## ***Main Options***

**Launch Program** automatically opens the RISA model in the specified program. If the specified RISA program is already open then the model will automatically be loaded. You will be prompted to save any other model that is already open.

**Write to File** just writes a BIM Exchange file to the specified destination. This option is required for use if RISA is not installed on the Revit computer. To load the exchange file as a model in RISA go to File\Import\BIM Exchange File.

**Export Selected Items Only** creates a BIM Exchange file containing only the elements currently selected in the Revit Model.

**Coordinate System** specifies which Revit coordinate system will be used to establish the model coordinates in the RISA model.

**Orient to True North** allows the export of Revit models to RISA using "True North" as the vertical plan direction, as opposed to "Project North".

**Merge Tolerance** specifies a tolerance below which the RISA-Revit Link will automatically connect elements that are very close to each other. This is especially useful in the case of beams that (accidentally) only nearly intersect in the Revit model.

**Footing Tolerance** specifies a tolerance below which the RISA-Revit Link will automatically connect footings that are very close to columns. RISA requires footings to fall directly beneath columns, so any footing not associated with a column will be ignored.

## ***Export Options***

**Redesign Members** is a RISAFloor specific option. In RISAFloor a Shape Group may be assigned to members (beams, columns, etc) from which the program will automatically choose an optimum size. An example of a Shape Group would be "Wide Flange", as opposed to an explicit Shape such as "W24x55"

When this box is checked the RISA-Revit link will ignore the explicit member size specified in the Revit model, and instead assign a corresponding shape group to the member in RISAFloor. This means that the member size in Revit will be ignored, and that RISAFloor will optimize the member size.

**Walls** specifies whether walls (and their openings) should be exported to the RISA model.

**Footings & Boundary Conditions** specifies whether footings, and boundary conditions should be exported to the RISA model.

**Slabs and Openings** specifies whether the slab edges, opening edges, and decks are to be created in RISAFloor based on their geometry in the Revit model. Because RISA has more limitations on slab edge geometry than Revit, the Link may modify the slab edges to be compatible with RISAFloor.

**Loads** specifies whether loads should be exported to the RISA model from Revit.

**Load Combinations** specifies whether load combinations should be exported to the RISA model from Revit.

## File Names

**Exchange File Name** designates the name of the exchange file that will be created by the Link. Browse to a target folder in which this file will be created, or browse to an existing exchange file that is to be updated.

The exchange file acts as an intermediary between RISA and Revit. It contains data that is not stored in either the RISA or Revit files. This data allows the link to keep track of both models to ensure that they are linked correctly.

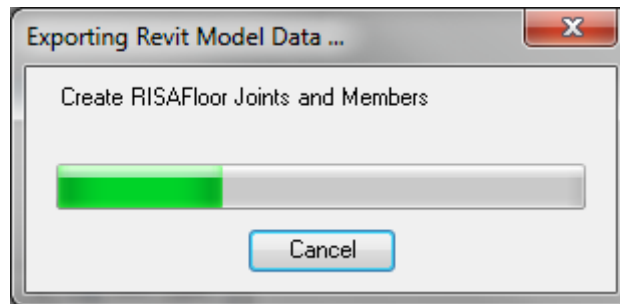
If you already have an exchange file for the current project then be sure to specify that same file (as opposed to specifying a new one).

**Base File Name** designates the name of the base file (RISA model file) that will be created from the exchange file. By default this will be given the same name and placed in the same location as the exchange file. Browse to a target folder in which this file will be created, or browse to an existing base file that is to be updated.

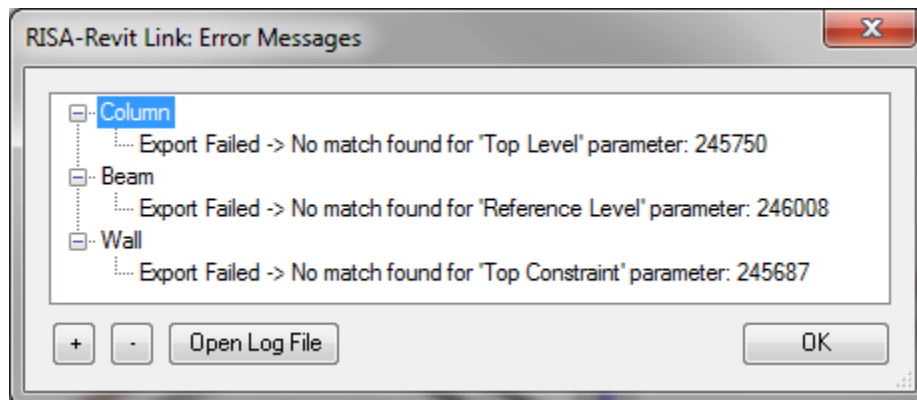
If you are exporting from Revit for the first time with a given model, leave this field blank and it will automatically be filled in.

## Export Process

Click OK to begin the export process. A progress bar will be shown during this process.



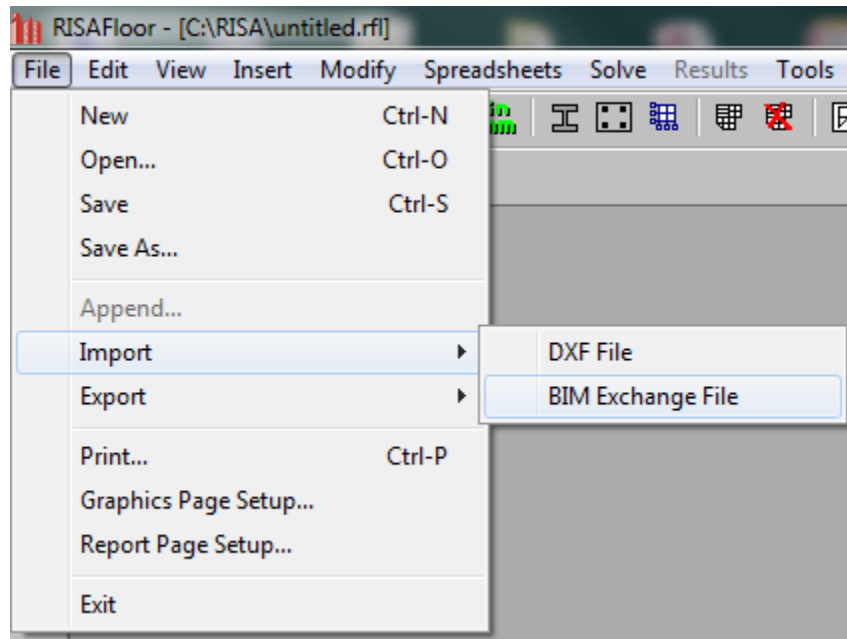
If the RISA-Revit Link encounters any errors during the export process it will report them in the Error Message dialog.



Errors will be grouped together by type. Use the +/- buttons to expand the trees and read each error. It is best to correct problems with the Revit model that generate errors before moving forward with the RISA model.

If the Launch Program option was selected during export then the RISA program will automatically be launched.

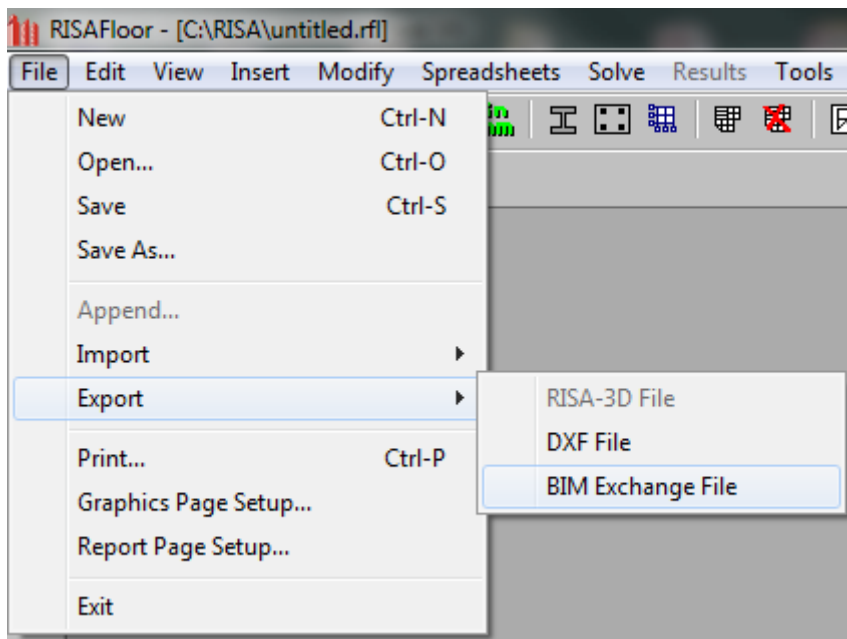
If Write to File was selected then you must import the exchange file into RISA. Launch the relevant RISA program, and Import the BIM Exchange File using the File Menu.



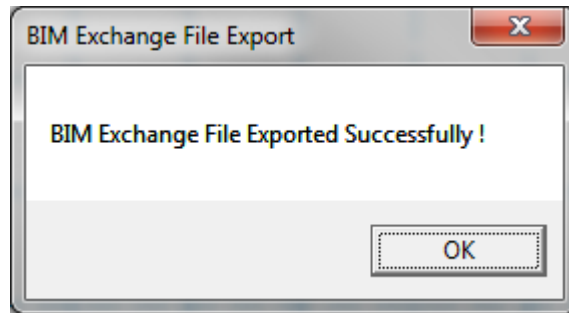
After importing the BIM Exchange File, RISA automatically creates a corresponding base (model) file in the same folder as the exchange file.

## Import RISAFloor or RISA-3D model to Revit Structure

Save the latest changes in the RISAFloor or RISA-3D model, then Export a BIM Exchange File using the File Menu. If you already have an exchange file for the current project then be sure to overwrite that same file (as opposed to creating a new one).



If the exchange file was created successfully, an export confirmation dialog appears.



**Note:**

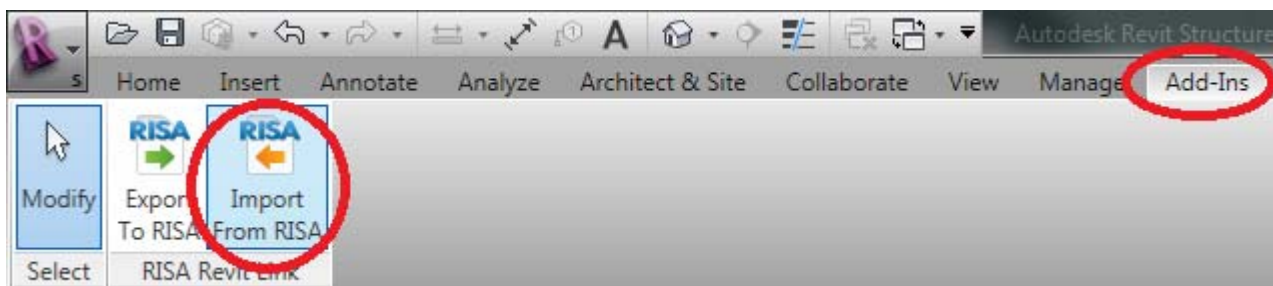
- The default BIM import/export directory can be set using the Tools > Preferences menu of the RISA program.

Open Revit Structure if it is not already open, and either open an existing model or create a new model into which the RISA model will be imported.

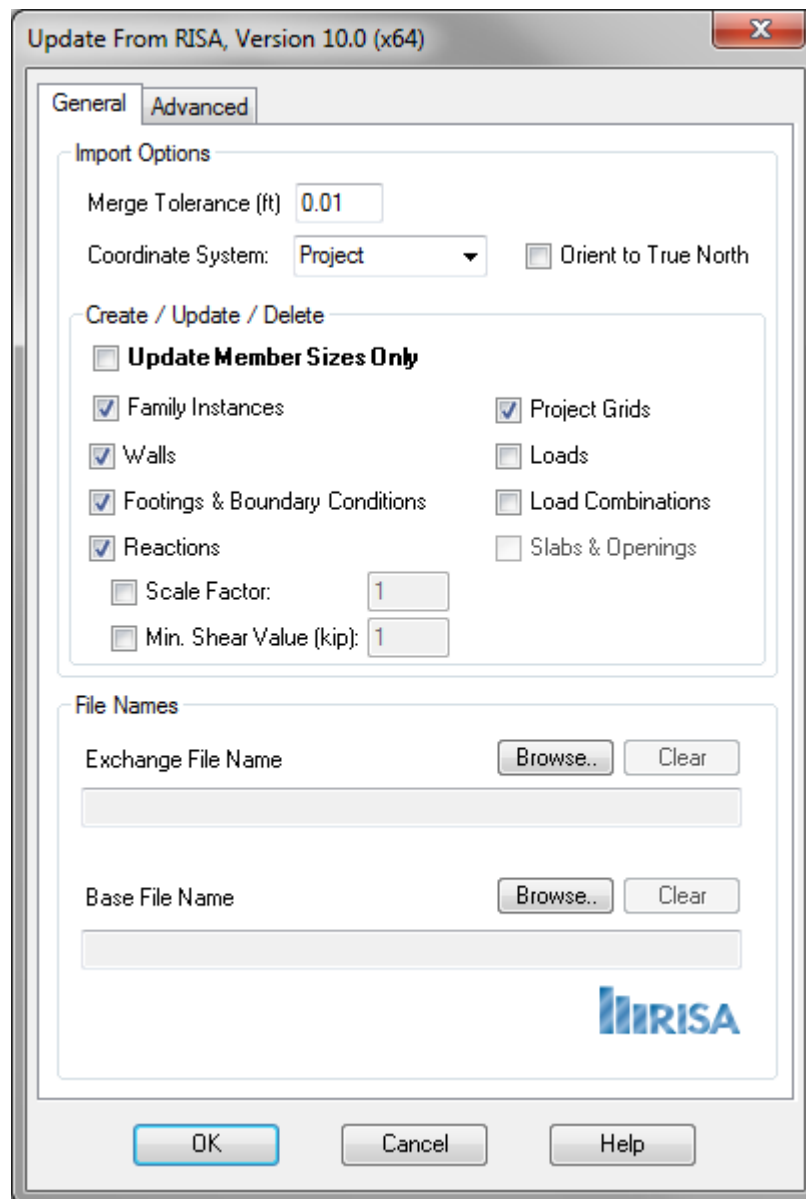
Once the Revit Structure model is ready for RISA Import, be sure to save the model .

Be sure that the current (active) view in Revit is a 3D view.

Click on the Add-Ins tab, and then click on the Import from RISA button.



The Update From RISA dialog will appear:



### ***Import Options***

**Merge Tolerance** specifies a tolerance below which the RISA-Revit Link will automatically connect elements that are very close to each other. This is especially useful in the case of beams that (accidentally) only nearly intersect in the Revit model.

**Coordinate System** specifies which Revit coordinate system will be used to establish the model coordinates from the RISA model.

**Orient to True North** allows the import of RISA models to Revit using "True North" as the vertical plan direction, as opposed to "Project North".

## **Create / Update / Delete**

**Update Member Sizes Only** determines whether or not model geometry is to be created/updated within the Revit model. This feature is typically only used after a full round-trip between models, and is a fast way to update member sizes, studs, camber, and reactions without making other changes to the Revit model.

**Family Instances** specifies whether families (beams, columns, braces, etc..) should be imported to the Revit model.

**Walls** specifies whether walls (and their openings) should be imported to the Revit model.

**Footings & Boundary Conditions** specifies whether RISAFoot footings, and joint boundary conditions should be imported to the Revit model.

**Reactions** specifies whether beam end reactions should be imported to the Revit model. An option exists to scale the end reactions, or specify a minimum value which smaller reactions should be rounded up to.

**Project Grids** specifies whether RISA project grids should be imported to the Revit model.

**Loads** specifies whether loads should be imported to the Revit model from RISA.

**Load Combinations** specifies whether load combinations should be imported to the Revit model from RISA.

**Slabs and Openings** specifies whether the slab edges, opening edges, and decks are to be created in Revit based on their geometry in the RISAFloor model.

## **File Names**

**Exchange File Name** designates the name of the exchange file that will be loaded by the Link. Browse to the folder in which this file exists.

**Base File Name** designates the name of the base file (RISA model file) that is linked to the exchange file.

## **Advanced Tab**

**Clear BIM IDs** is useful for changing which Revit model your RISA model is linked to. Once a RISA model is linked with a Revit model, the Link stores the BIM IDs (tags which tie RISA members to Revit members) within the RISA model. If this RISA model is then linked to a different Revit model, it still contains associations to the original Revit model, which can cause problems with the new Revit model. Clearing these IDs allows the RISA model to correctly link with the new Revit model.

**Set all beams' Horizontal Projection to Centerline** is used in models where beams are placed very close to other elements (such as beams or walls) whereby Revit automatically snaps the beam's analytical line to align with the other element. Using this option effectively disables that auto-snapping feature, and maintains correct analytical geometry. This option will set all beams to have a centerline horizontal projection though, so any intentional horizontal projections within the Revit model will also be reset.

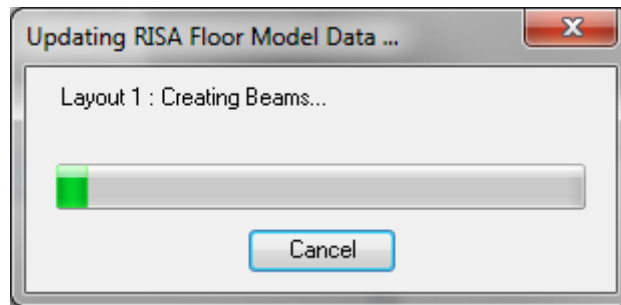
**Shape Library Options** allows you to specify which Revit libraries are used to load shapes when importing from RISA. When the Link searches for a shape to be loaded into the Revit model it will look at these libraries in sequential order.

The Imperial and Metric library paths are set in the Revit File Locations defaults. You can also specify a path to a custom library (by checking the Use Custom Library box), which the Link will use if it cannot find the shapes in the Revit libraries.

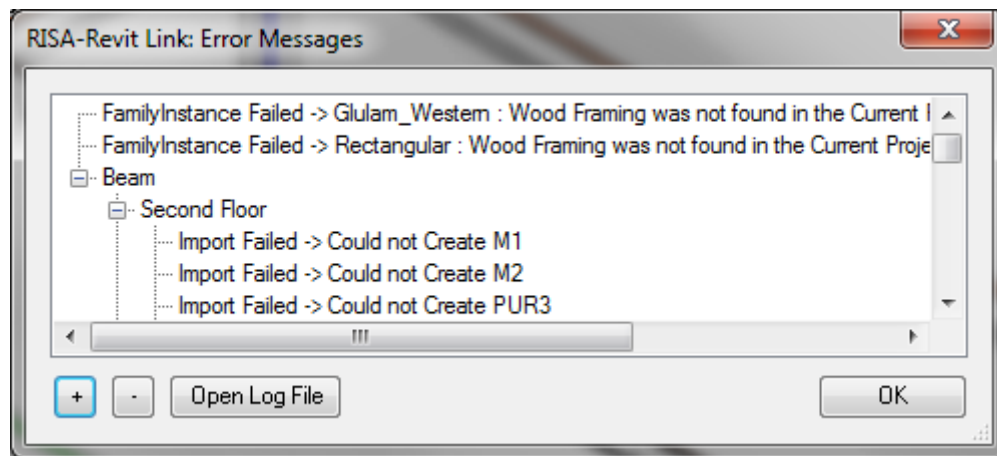
When using custom libraries you must browse to a folder which has a subfolder titled *Structural*. The *Structural* folder must have subfolders titled *Columns* and *Framing* respectively. Those folder must then have material-specific folder names, which contain the custom families. This folder hierarchy matches the Revit default folder hierarchy.

## Import Process

Click OK to begin the import process. A progress bar will be shown during this process.



If the RISA-Revit Link encounters any errors during the import process it will report them in the Error Message dialog.



Errors will be grouped together by type. Use the +/- buttons to expand the trees and read each error. It is best to correct problems with the RISA model that generate errors before moving forward with the Revit model.

# Tagging Beams

Beams within the Revit model contain parameters (member data such as beam size, camber, end reactions, etc) that can be displayed on framing plans. This information is automatically transferred from RISA models. The RISA-Revit Link comes with several useful tags to display this information.

The directions below explain how to tag all of the beams in a framing plan at once. Specific tags may be omitted from this process if desired.

## Loading Tags

If you have not already done so, load the RISA tags into your Revit model. To do so, click on the **Insert** tab, and click on the **Load Family** button.



Navigate to the following folder:

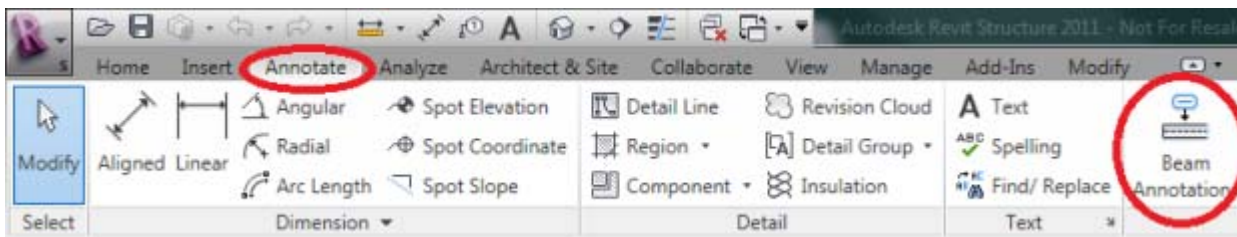
**C:\RISA\RISA Revit Link\_2012\Beam Tags\**

The path for the folder above may be different if you did not install the link in the default location. Select all of the files in that folder and click the **Open** button. This will load the RISA tags into your Revit model.

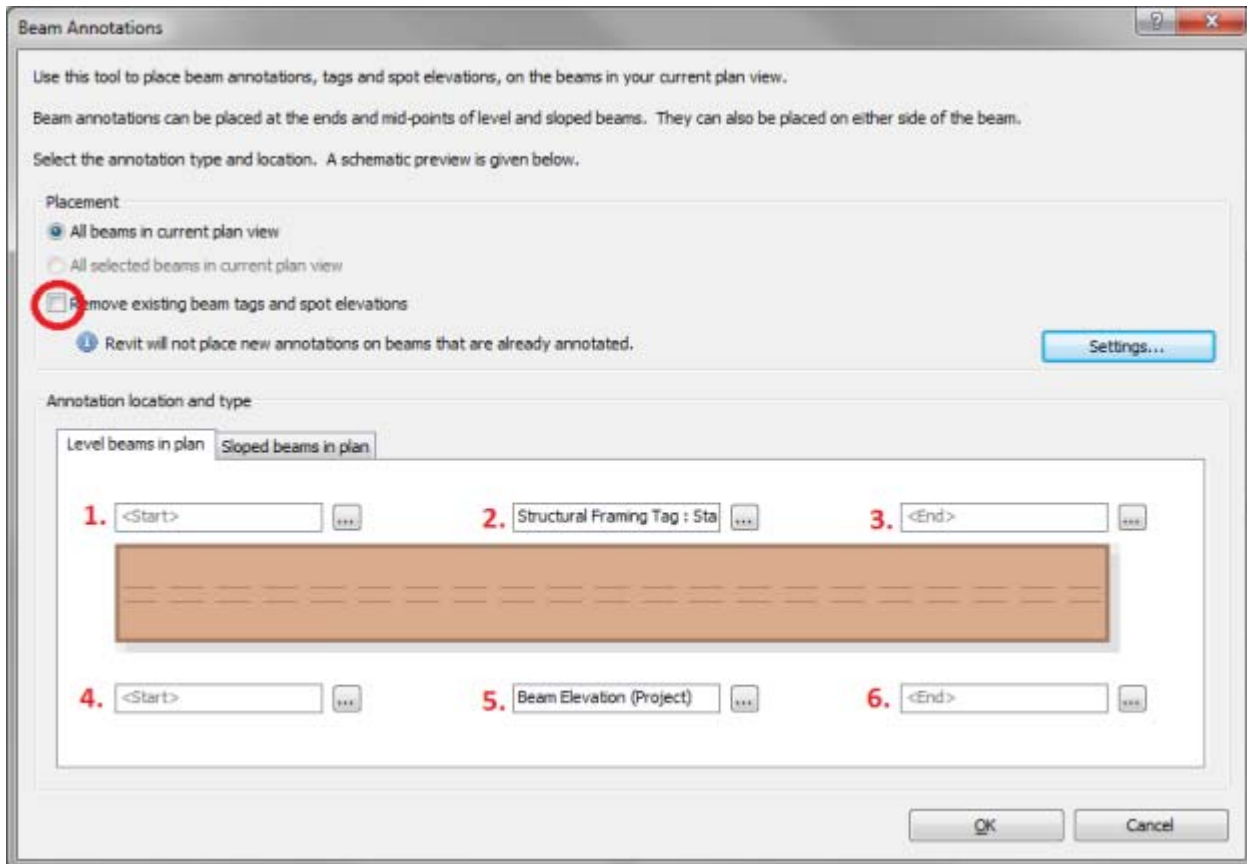
## Procedure

Ensure that the Revit model has had a RISA model imported, and that end reactions were also imported (if applicable). The tagging process must be done for each framing plan separately, so open the first relevant framing plan.

Click on the Annotate tab within Revit, and then click on the "Beam Annotations" button:




The Beam Annotation Dialog will open. If the beams already have tags you may want to check the box "Remove existing beam tags...", which will replace the existing tags with the new RISA tags. Choose between the "Level beams in plan" and "Sloped beams in plan" tabs as applicable.

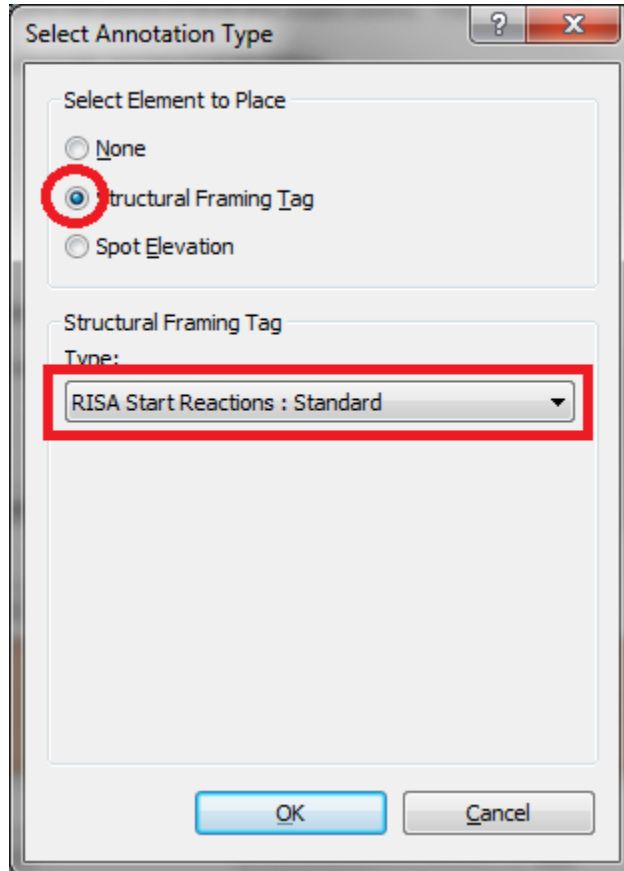


The procedure for each tag is shown below:

### **Loading Tag #1**

Click on the Load Tag button .

Choose the "Structural Framing Tag" radio button, then click in the "Type" dropdown and choose **RISA Start Reactions**.



### **Loading Tag #2**

Repeat the procedure for Tag #1, loading the **Beam Size** tag instead.

### **Loading Tag #3**

Repeat the procedure for Tag #1, loading the **RISA End Reactions** tag instead.

### **Loading Tag #4**

Repeat the procedure for Tag #1, loading the **RISA Start Moments** tag instead.

### **Loading Tag #5**

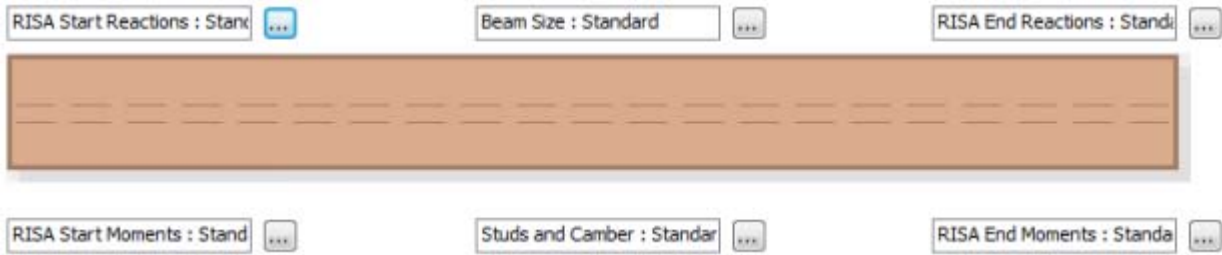
Repeat the procedure for Tag #1, loading the **Studs and Camber** tag instead.

### **Loading Tag #6**

Repeat the procedure for Tag #1, loading the **RISA End Moments** tag instead.

## Applying Tags

The framing tags should now be shown as below:



Click OK in the "Beam Annotations" dialog, and the tags will automatically be applied to the beams. Each tag is an individual element that may be deleted or moved as necessary.

## Technical Support

Technical support is an important part of the RISA-Revit Link. There is no charge for technical support for all licensed owners of the **current** version of RISA-3D and/or RISAFloor. Technical support is very important to the staff at RISA Technologies. We want our users to be able to reach us when they are having difficulties with the Link. However, this service is not to be used as a way to avoid learning the program or learning how to perform structural modeling in general.

**Hours:** 6am to 5pm Pacific Time, Monday through Friday

Before contacting technical support, please do the following:

1. **Search the Help File or User's Manual.** Most questions asked about the RISA-Revit Link are already answered there. Use the table of contents or index to find specific topics and appropriate sections. We go to great lengths to provide extensive written and online documentation for the link. We do this in order to help you understand the link and make it easier to use.
2. Visit our website: [http://risatech.com/partners/prt\\_revit.html](http://risatech.com/partners/prt_revit.html). Ensure that you have the **latest version** of the RISA-Revit Link. The version number that you are currently running can be viewed **at the top of the import/export dialogs** within Revit.
3. Look at your analytical model in Revit to see if anything is wrong with it. Nine times out of ten the errors that occur during transfer are due to incorrect analytical models.
4. Take a few minutes to experiment with the problem to try to understand and solve it.

Please be prepared to send us your Revit model. If the file size exceeds 5MB then it must be uploaded to our website. You can contact support via e-mail for instructions on how to upload your model to the website. Please **relinquish your worksets** prior to sending the Revit model, and if possible please send the Central model.

**E-Mail:** support@risatech.com

This method is the only way to send us a model you would like help with. Make sure you tell us your name, company name, RISA Key ID (go to Help\About), phone number, and give a decent problem description. Make sure to specify which program you are integrating with, and whether you are using the "Export Selected Items Only" option.

**Phone Support:** (949) 951-5815

Feel free to call, especially if you need a quick answer and your question is not model specific and therefore doesn't require us to look at your file.



## Appendix A - Data Exchange

### Floors/Levels

RISAFloor Floors are transferred into Revit as Levels. Revit Levels are transferred to RISAFloor as Floors. The following properties are supported:

- Level/Floor Name
- Elevation

RISA-3D beams and braces (including RISA-3D models embedded within RISAFloor) create Revit levels when transferred.

**Note:**

- RISAFloor does not support negative floor elevations. Revit levels with an elevation below 0'-0" are not transferred to RISAFloor.
- Revit Level names may not exceed 32 characters.
- No two Level names in Revit may be the same.
- No two Floor names in RISAFloor may be the same.

### Grids

Project Grids in RISAFloor and RISA-3D are transferred to Revit as Grids. Revit Grids are transferred to RISAFloor and RISA-3D as Project Grids. The following properties are supported:

- Grid Name
- Grid Position

**Note:**

- RISAFloor and RISA-3D grids are not assigned start/end elevations as they are in Revit. Therefore they are always imported to Revit at 0'-0" elevation.
- RISAFloor and RISA-3D grids are not assigned start/end locations in plan as they are in Revit. Therefore they are always extended to the furthest perpendicular grid lines.
- RISAFloor and RISA-3D do not support angled or radial grids. Therefore they are ignored when exported from Revit. Angled and radial grids are also ignored during the process of importing from RISA to Revit.

### Beams

Beams within RISAFloor and Members assigned to Type "Beam" in RISA-3D are both transferred to Revit as Structural Framing Beams. Revit Structural Framing Beams are transferred to RISAFloor as Beams, and to RISA-3D as Members assigned to Type "Beam".

The following properties are supported:

- Rotation Angle
- Material
- Beam Size
- Start/End Releases
- Gravity/Lateral Flag
- Location

## **Mapping**

The [Mapping File](#) is used to match RISA Shape names with Revit Family Instance names. When exporting to RISA-3D or RISAFloor, if a matching shape name cannot be found in the mapping file then the beam is created as a rectangular 1"x1" shape.

When importing from RISA-3D or RISAFloor into Revit, if a matching shape name cannot be found in the mapping file then the beam is not transferred.

A notification will be made in the warning log if any problems occur with beam transfers.

## **Sloped Beams**

RISAFloor only supports sloped beams at the top Floor. Any sloped beams on Revit Levels below the top Level will be flattened (end offsets set to zero) when transferred to/from RISAFloor.

RISAFloor does not support negative elevation offsets for beams. Any Revit Beam with a negative end offset will be reset to have zero offset when transferring to/from RISAFloor.

Revit beams must be assigned to a Reference Level in Revit. Sloped beams in RISA-3D are assigned to a Revit Level at their lower end. The higher end is assigned a corresponding End Offset from the Reference Level.

## **End Releases**

RISAFloor only supports "Pinned" or "Fixed" end releases. If the end releases of a Revit Beam do not correspond with standard Pinned or Fixed releases then the link chooses the closest match when transferring to RISAFloor. The Revit end releases in this circumstance are not affected when transferring back to Revit.

## **Design Lists/Shape Groups**

RISAFloor members which are not assigned an explicit beam size are assigned to a Shape Group. The RISA-Revit Link does not transfer shape groups. The RISAFloor model must be solved, and the results must be saved in order to transfer the beam sizes chosen by RISAFloor during solution.

RISA-3D Members are assigned a Design List of "None" when transferred from Revit.

## **Composite/Camber**

All RISAFloor beams are created as Composite when transferred from Revit. Both segmented and uniform studs are transferred back to Revit as beam properties. Beams that are assigned Camber in RISAFloor have their camber transferred to Revit as a beam property. The RISAFloor model must be solved, and the results must be saved in order to transfer the studs and camber chosen by RISAFloor during solution.

## **End Reactions**

Beam end reactions are transferred to Revit from both RISA-3D and RISAFloor.

Reactions from RISAFloor are determined as either Unfactored or Factored based on a setting within the RISAFloor Global Parameters.

Reactions transferred from RISA-3D are envelope values determined from the load combinations. The values are exact shear and moment values determined from Load Combinations, so if Strength-Level Load Combinations (e.g. 1.2D + 1.6L) are used in RISA-3D then the end reactions sent to Revit will be at strength level.

When a RISA-3D model is integrated with RISAFloor the envelope of the absolute values of shears and moments is used comparing both RISAFloor and RISA-3D end reactions. This ensures that the controlling reaction is sent to Revit for lateral members.

The RISAFloor model must be solved, and the results must be saved in order to transfer the end reactions to Revit. The RISA-3D model must be solved using an Envelope solution, and the results must be saved in order to transfer end reactions to Revit. Both models must be solved as described above in order to get automatic enveloping of gravity and lateral reactions.

- RISA I-End Maximum Shear is mapped to Revit parameter "RISA Start Reaction".
- RISA J-End Maximum Shear is mapped to Revit parameter "RISA End Reaction".
- RISA I-End Maximum Moment is mapped to Revit parameter "RISA Start Moment".
- RISA J-End Maximum Moment is mapped to Revit parameter "RISA Start Moment".

## **Cantilevers**

A cantilever beam must be drawn as two elements to transfer from Revit to RISAFloor. The cantilever portion must have a "Cantilever Moment" assigned to the end which the backspan connects to. The backspan does not require a corresponding "Cantilever Moment" to be assigned. The link automatically recognizes it as a backspan for the cantilever.

The two elements are created as one cantilever beam within RISAFloor, so they share the same properties, and the properties of both Revit elements are updated when importing from RISAFloor.

## **Columns**

Column Stacks within RISAFloor and Members assigned to Type "Column" in RISA-3D are both transferred to Revit as Structural Columns. Revit Structural Columns are transferred to RISAFloor as Column Stacks, and to RISA-3D as Members assigned to Type "Column".

The following properties are supported:

- Rotation Angle
- Material
- Column Size
- Gravity/Lateral Flag
- Location

### **Note:**

- Gravity Columns from Revit are automatically created as Lateral in RISA-3D and RISAFloor if they share a node with any lateral elements.
- RISAFloor Only: Columns in Revit spanning multiple levels should be created as individual members at each floor, rather than continuous columns spanning multiple levels. Splices can be adjusted in RISAFloor and exported back to Revit in order to get an accurate column stack model.

## Braces

Members assigned to Type "V-Brace" in RISA-3D are transferred to Revit as Structural Framing Braces. Revit Structural Framing Braces are transferred to RISA-3D as Members assigned to Type "V-Brace".

Members assigned to Type "H-Brace" in RISA-3D are transferred to Revit as Structural Framing Beams with a Structural Usage set to Horizontal Bracing. Revit Structural Framing Beams with a Structural Usage set to Horizontal Bracing are transferred to RISA-3D as Members assigned to Type "H-Brace".

Braces are always created as Lateral elements within RISA-3D. The following properties are supported:

- Rotation Angle
- Material
- Brace Size
- Start/End Releases
- Location

Braces transferred to/from RISAFloor are handled in the integrated RISA-3D model within the RISAFloor model. For that reason they are not visible in RISAFloor directly, however they can be accessed using the Director tool. RISAFloor braces are treated the same as RISA-3D Braces.

Horizontal Braces follow the same guidelines as [Beams](#).

Each end of a Vertical Brace must be assigned to a different level. When transferring to Revit these levels are automatically created for each brace. This may result in a large number of levels being created in the case of vertical braces used as latticework.

## Walls

Wall Panels within RISA-3D and RISAFloor are transferred to Revit as Structural Walls. Revit Structural Walls are transferred to RISA-3D and RISAFloor as Wall Panels. Additionally, vertical plate elements within RISA-3D are transferred to Revit as Structural Walls. The following properties are supported:

- Structural Usage/Lateral Flag
- Rectangular Opening Size/Location
- Rectangular Boundary
- Location

The Structural Usage parameter within Revit determines whether the wall is exported to RISA as Gravity or Lateral. A Structural Usage of "Shear" or "Combined" results in a lateral wall in RISA. Any other Structural Usage (other than "Not for Analysis") results in a Gravity wall in RISA.

### Note:

- Non-rectangular walls within Revit are created as rectangular in RISA using the smallest possible bounding rectangle.
- Wall materials are not mapped.
- Walls with columns embedded within them are split at the columns when transferring from Revit to RISAFloor.
- Only Wall Opening Elements are transferred from Revit to RISA. Openings defined as "Window Opening", "Door Opening", and wall profile line sketches are all ignored.

## In-Place Families

Structural members that are grouped together in Revit, or part of a higher level Family are transferred using the link, and are treated as independent elements.

## Footings

Footings defined in RISA-3D using RISAFoot are transferred to Revit as Isolated Foundation elements. Isolated Foundation elements in Revit are transferred to RISA-3D as RISAFoot footings. Only footings that occur directly beneath (or very near) Structural Columns are transferred. All others are ignored. The following properties are supported:

- Rotation (aligned with Column)
- Dimensions (length, width, thickness)
- Location

### Note:

- RISAFoundation footings are ignored by the Link.
- If no RISAFoot solution is present (and saved) then the Maximum Dimensions which are defined in Footing Definitions are transferred to Revit.

## Decks/Slabs

Decks defined in RISAFloor are transferred to Revit as Floor/Roof Elements. Floor/Roof Elements in Revit are transferred to RISAFloor as Decks.

Slab Edges are created in RISAFloor based on the overhang of Revit Floor/Roof Elements. RISAFloor Slab Edges are not transferred to Revit. Closed-circuits of perimeter beams are used to determine slab edge circuits.

Slab Openings in RISAFloor are transferred to Revit as Floor Opening Elements. Floor Opening Elements in Revit are transferred to RISAFloor as Slab Openings.

The following properties are supported:

- Slab Overhang (approximated)
- Deck Thickness
- Span Direction
- Slab Concrete Strength
- Slab Concrete Density (not for self weight)
- Slab Elastic Modulus

### Note:

- For Revit Floor/Roof elements which do not have edges parallel to perimeter beams, the Link creates RISAFloor Slab Edges which are parallel to the perimeter beams.
- Deck self weights are not linked to Revit, and must be defined in Deck Definitions in RISAFloor.
- Default decks are ignored by the Link

---

## Materials

RISA Materials assigned to Beams, Columns, and Braces are transferred into Revit. Revit Materials assigned to Beams, Columns, and Braces are transferred into RISA. Walls are assigned to General Materials. The [Mapping File](#) is used for transferring materials between RISA and Revit. The following material types are supported:

- Hot Rolled Steel
- Cold Formed Steel
- Concrete
- Wood
- General

## Boundary Conditions

Boundary conditions assigned to Joints in RISA-3D are transferred to Revit as Boundary Conditions. Boundary conditions assigned to elements in Revit are created at Joints in RISA-3D.

Translations, rotations, and spring stiffnesses are supported. Pinned boundary conditions are automatically applied to the bottom of column stacks transferred to RISA-3D.

## Loads

### Note:

- Only loads applied in Global Directions are supported. All others are ignored.

### *Point Loads*

Point and Joint loads defined within RISA-3D and RISAFloor are transferred to Revit as Point Loads. Point Loads in Revit are transferred to RISA-3D and RISAFloor as Point or Joint loads, depending on whether the load falls on a member or a joint.

### *Line Loads*

Distributed Loads defined within RISA-3D and RISAFloor are transferred to Revit as Line Loads. Line Loads in Revit are transferred to RISA-3D and RISAFloor as distributed loads.

### Note:

- Revit Line Loads which span multiple members will be broken down into multiple distributed loads when transferred to RISA-3D.

### *Area Loads*

Area Loads defined in RISA-3D and RISAFloor are transferred to Revit as Area Loads. Area Loads defined in Revit are transferred to RISA-3D and RISAFloor as Area Loads.

### Note:

- Revit Area Loads which are defined by more than 4-points are ignored by the Link when transferring to RISA-3D.
- Each Revit Area Load is given its own Area Load definition within RISAFloor. Identical area loads are lumped into one Definition.
- Revit only allows one load case per load. Therefore when importing RISAFloor into Revit, only one load magnitude will be transferred from a given Area Load Definition. The load chosen will be the first encountered in the following order: LL, DL, OL1, etc..

### ***Load Cases/Categories***

Load Cases and Categories are mapped between RISA and Revit using the [Mapping File](#).

### ***Load Combinations***

The transfer of Load Combinations between RISA and Revit is limited due to inherent differences in how the programs handle them.

**Note:**

- The "State" flag within Revit maps to the "Service" flag within RISA-3D
- The "Type" flag within Revit maps to the "Solve" flag within RISA-3D
- RISA-3D only supports load combination nesting up to one level deep. Any further nesting will be ignored by the Link.



## Appendix B - Mapping Files

RISA and Revit use different terminologies for Shape Names, Material Names, and Load Categories. These terminologies are linked to each other by a process of "Mapping". Mapping is done using a Mapping file designed to be customized per your standards.

The Excel based XML mapping file "RISA\_Revit\_Mapping\_File.xml" is installed to the RISA-Revit Link folder. The Link uses the mapping file during transfers between RISA and Revit. The file consists of three tabs: Shapes, Materials, and RF Load Cases.

### Shape Mapping

The Shapes tab consists of three columns: "RISA ShapeName", "REVIT ShapeName", and "ShapeType". There are many shapes already mapped in the file that is installed. Additional shapes may be added, and existing shapes may be changed.

The Link looks for shape names from this tab of the spreadsheet. If they are not found, it looks for shape names that are identical between RISA and Revit, and maps them automatically.

For automatic concrete shape mapping the general conventions must be followed for naming in Revit. For example, rectangular concrete shapes must be named in the format 'a x b' and circular shapes must be named in the format 'c'. a, b, and c are the width, depth and diameter respectively. It is important to note that Revit stores rectangular concrete shape names as 'width x depth' whereas RISA stores these names as 'depth x width'. This behavior is being accounted for by the Link.

The following 'Shape Types' should be used in the Shape Mapping File.

Hot Rolled	
WF_SHAPE	Wide Flange
TUBE_SHAPE	Tube
PIPE_SHAPE	Pipe
CHANNEL_SHAPE	Channel
WT_SHAPE	WT
DBL_L_SHAPE	Double L
SNGL_L_SHAPE	Single L
RECT_SHAPE	Rectangular
BAR_SHAPE	Bar
TAP_WF_SHAPE	Tapered Wide Flange
Wood	
NDS_SHAPE	Rectangular
NDS_ROUND_SHAPE	Round
Concrete	
CRECT_SHAPE	Rectangular
CRND_SHAPE	Round
CL_SHAPE	L Shape
CT_SHAPE	T Shape
Joists	
KJOIST_SHAPE	K Joist
LHJOIST_SHAPE	LH Joist
DLHJOIST_SHAPE	DLH Joist
SLHJOIST_SHAPE	SLH Joist
KCSJOIST_SHAPE	KCS Joist
JOISTGIRDER_SHAPE	Joist Girder
WOOD_JOIST_SHAPE	Wood Joist

## Material Mapping

The Materials tab consists of three columns: “RISA MaterialName”, “REVIT MaterialName”, and “MaterialType”. There are many materials already mapped in the file that is installed. Additional materials may be added, and existing shapes may be changed.

### **Revit to RISA**

If the mapping for a particular Revit material exists in the Mapping File, it is mapped over the RISA material name mentioned on the spreadsheet. The material properties are preserved in RISA, and are not overwritten.

If a material match is not found in the mapping file, the Revit material name is sent to RISA. Material properties are created based on Revit material properties during the initial transfer, and are not overwritten thereafter regardless of changes made to the RISA material properties.

### **RISA to Revit**

If the mapping for a particular RISA material exists in the Mapping File, it is mapped over the Revit material name mentioned on the spreadsheet. The material properties in Revit are updated to the RISA material properties.

If a material match is not found in the mapping file, the RISA material name is sent to Revit. Material properties are created based on RISA material properties during the initial transfer.

#### Available Material Types in RISA

CONCRETE_MATL	Concrete Material (Family Instances)
HOT_ROLLED_STEEL_MATL	Steel Material (Family Instances)
NDS_WOOD_MATL	Wood Material (Family Instances)
GENERAL_MATL	General Material (WallTypes)

#### **Note:**

- The RISA Material Name may not exceed 19 characters in length.
- No two RISA materials should be mapped to the same Revit material.
- No two Revit materials should be mapped to the same RISA material.
- Material property changes should be made in both RISA and Revit simultaneously for consistency.

## RISAFloor Load Case Mapping

This RF Load Cases tab consists of three columns: “RISA LoadCaseName”, “REVIT LoadCaseName” and “LoadCaseType”. There are many load cases already mapped in the file that is installed. Additional load cases may be added, and existing shapes may be changed.

RISAFloor is limited to a set of predefined Load Cases (Categories). For this reason, new Revit Load Cases cannot be created in a RISAFloor model, so the Revit Load Cases must be mapped to the RISAFloor ones.

### **Revit to RISA**

The Load Case of every load that is transferred from Revit to RISA is mapped using the mapping file. If no mapping for a given Revit Load Case is present then the load will be transferred to RISAFloor under the OL4 category. RISA-3D does not have this limitation, so it will create new Load Cases using the Revit names.

The “LoadCaseType” is used to distinguish whether the load should be applied to the RISAFloor model, or to the RISA-3D model embedded within RISAFloor.

**RISA to Revit**

The Load Case of every load that is transferred from RISA to Revit is mapped using the mapping file. If no mapping for a given RISA Load Case is present then a new Load Case will be created in Revit using the RISA Load Case name.

## Available Load Cases in RISAFloor

DL PreComp	Pre Composite Dead Load
DL PostComp	Post Composite Dead Load
LL- Non	Live Load
LL-Reduce	Reducible Live Load
LLS - Non	Live Load Special
LLS-Reduce	Reducible Live Load Special
RLL- Non	Roof Live Load
RLL-Reduce	Reducible Roof Live Load
SL	Snow Load
SLN	Non Shedding Snow Load
RL	Rain Load
OL1	Other Load 1
OL2	Other Load 2
OL3	Other Load 3
OL4	Other Load 4
Dyn Mass	Dynamic Mass
VLL	Vibration Load

**Note:**

- RISA Load Case names may not exceed 11 characters in length.

# Index

## A

Annotate, 22

## B

Base File Name, 16, 20

Beam Annotations, 22

Beam Size, 24

Beams, 28

BIM ID, 20

Boundary Conditions, 33

Braces, 31

## C

Camber, 29

Cantilevers, 30

Columns, 30

Composite, 29

Coordinate System, 15, 19

Create / Update / Delete, 20

## D

Data Exchange, 28

Decks, 32

Design Lists, 29

## E

End Reactions, 30

End Releases, 29

Exchange File Name, 16, 20

Export Options, 15

Export Process, 16

Export Selected Items Only, 15

Exporting, 14

## F

Family Instances, 20

File Names, 16, 20

Floors, 28

Footing Tolerance, 15

Footings, 32

Footings & Boundary Conditions, 15, 20

## G

Getting Started, 14

Grids, 28

## H

Horizontal Projection, 20

## I

Import Options, 19

Import Process, 21

Importing, 17

In-Place Families, 32

Install, 8

## L

Launch Program, 15

Levels, 28

Load Combinations, 15, 20

Loads, 15, 20, 33

## M

Main Options, 15

Mapping, 29

Mapping Files, 36  
Materials, 33  
Merge Tolerance, 15, 19

## **O**

Orient to True North, 15, 19

## **P**

Phone Support, 26  
Project Grids, 20

## **R**

Reactions, 20  
Redesign Members, 15  
RISA End Moments, 24  
RISA End Reactions, 24  
RISA Products, 15  
RISA Start Moments, 24  
Round-Tripping, 12

## **S**

Shape Groups, 29  
Shape Library Options, 20

Slab Perimeters and Openings, 15, 20  
Slabs, 32  
Sloped Beams, 29  
Structural Framing Tag, 24  
Studs and Camber, 24  
Support E-Mail, 26

## **T**

Tagging Beams, 22  
Technical Support, 26

## **U**

Update Member Sizes Only, 20

## **V**

Version, 10

## **W**

Walls, 15, 20, 31  
Website, 8  
Workflow, 11  
Workflow Problems, 13  
Write to File, 15